

Rock & Roll Diner is winter show

Auditions for the adult winter show "Rock & Roll Diner," is set for Monday, November 27 at 7:00 p.m. at Community of Grace Church. For those who absolutely cannot make it then, there will be a short audition Wednesday, December 6 from 5:00-6:00 at Community of Grace. Auditions are open to all Elkhorn school district residents, and current and former ECT board members and their families, ages 18 and above.

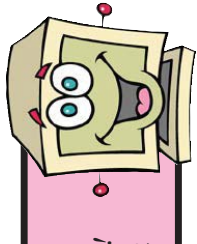
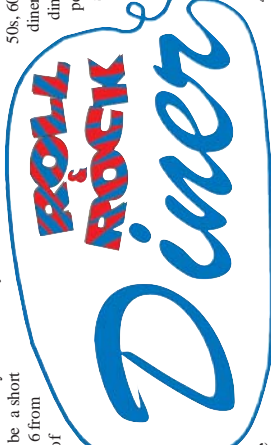
Rehearsals will be minimal, similar to last year's show. There will be one rehearsal before the end of the

year to go over the show, hand out practice CDs and music and to assign songs. Rehearsals will begin three times a week in January, and the

The show is an array of music from the 50s, 60s and 70s, and it all takes place in a diner. Famous performers come into the diner. Some will sing for their supporter, others will just show up and sing.

We are looking for a comical diner owner who will do most of the dialogue. This person could be a singer, but it wouldn't be necessary.

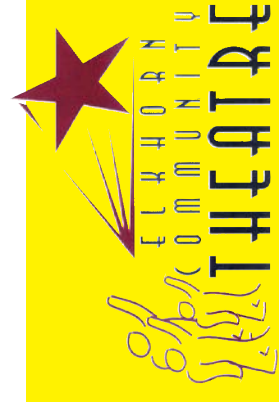
For further information call Mike or Penny Overmann at 289-4413.



Visit Our Web Site at
Check out the pictures from the shows we have produced since 1998!
www.elkhorncommunitytheatre.com



P.O. Box 677
 Elkhorn, NE 68022



2006 Board of Directors

- Allen Barnard, President 691-8050
- Cindy Kahnk, Vice President 289-1068
- Mark Latta, Secretary 894-5750
- Larry Brophy, Treasurer 289-2059
- Riley Garrigan 289-3378
- Janet Mella 289-5476
- Penny Overmann 289-4413
- Mike Overmann, Ex-Officio 289-4413

Adult Winter Show Audition Info on Back Page!

"Oliver!" a big hit

The summer musical, "Oliver!" was enjoyed by nearly 1,100 people last summer. It was ECT's ninth summer musical at Elkhorn High School. The tenth could be the last at this facility.

"It is becoming unaffordable to put on a community production at the Elkhorn High School auditorium," said board president Allen Barnard.

The production budget of "Oliver!" took a big hit when the board was blind-sided by a bill for nearly double of what the theatre had spent in the past on the rental of the high school.

"The school is wanting even more next summer," stated Barnard. Previously, the Elkhorn Community Theatre was charged \$1,600 to use the school facility for approximately 8 weeks of rehearsal for its summer show. Next summer the school district will charge \$3,600 in rent for just 12 rehearsals and 5 performances. Additionally, the school board is now requiring ECT to purchase an insurance policy to cover the people attending the show, at a cost of over \$500. Luckily, the Community of Grace Church has agreed to allow ECT to rent their facility for the first few weeks of rehearsals at an extremely reasonable rate.

Without a major donor or a special rate granted by the Elkhorn School Board, ECT will probably not be able to afford this additional \$2,500 each year for renting the facility. The ECT board of directors has been debating solutions to this problem by meeting twice a month since late summer, and has been exploring other facilities in the community. One solution was to cancel the summer show altogether, but the board decided to give the school one more try, with having a very limited number of rehearsals there. How successful it will be is yet to be determined. The challenges of having just 12 rehearsals in the auditorium, and having to put a set together that can either be built off-site or done mostly with backdrops and a few set pieces are going to make this production very difficult to pull off.

"The Board is going to need the assistance of the membership more this summer than ever before," stated Mark Latta, ECT Secretary. "We're going to have to totally eliminate our costume budget, so folks will be on their own for their costume, and also we'll need all hands on deck when the set and lights come into play." This increase in rent is due to a rate change directed by the EPS school board in response to recent events. We encourage the ECT membership to call and/or write their school board members and ask them for special consideration for ECT.



From right: Fagin (Larry Brophy) tells Oliver (Patrick Hays) Dodger (Brandon Russell) and Charlie (Jake Kaufmann) some tricks of the street.

Elkhorn Community Theatre was founded with the intent for Elkhorn school district residents, including forming on a large-scale stage.

The ECT Board recently clarified part of its audition policy for all ECT productions. It was approved by unanimous vote of the board October 31, 2006

1. Auditions for ECT productions will be advertised as open to Elkhorn School District residents, as well as current and past ECT board members and their families only. The board will inform all directors that it is the strict policy of the theater to cast residents of the Elkhorn School District in all roles of the production. The director will be notified that pre-casting ECT productions is not a practice of the theater. Exceptions for unexpected events may be requested and the director *must* consult with the board and the exception *may* be granted only with majority board approval.



Upcoming ECT Events:

- November 27:** Auditions for *Rock & Roll Diner* - 7:00 p.m. at Community of Grace
- December 6:** Auditions for *Rock & Roll Diner* - 5:00 p.m. at Community of Grace
- January 4:** Auditions for *Wonderful Wizard of Oz* - 6:30 p.m. at Community of Grace
- January 5:** January Ball Reservation due by 5:00 p.m. - January Ball is January 20



Don't miss Rock & Roll Diner Auditions November 27

You're Invited to Attend the Elkhorn Community Theatre's annual

JANUARY BALL

Saturday, January 20, 2007 • 7:00 p.m.
"The Club" at Indian Creek
20100 West Maple Road Elkhorn, Nebraska 68022

Hors d'oeuvres and Desserts
Dancing • Silent Auction • Black Tie Optional • Children Welcome

All this for just \$35 per person

Mail your check or call 289-2329 with your Visa or Mastercard to make your paid reservations by January 5, 2007
Sorry, no late reservations are allowed

Memberships also Available at the Door

Current 2007 Members will Vote for 2007 Board Members
One Ballot per Membership

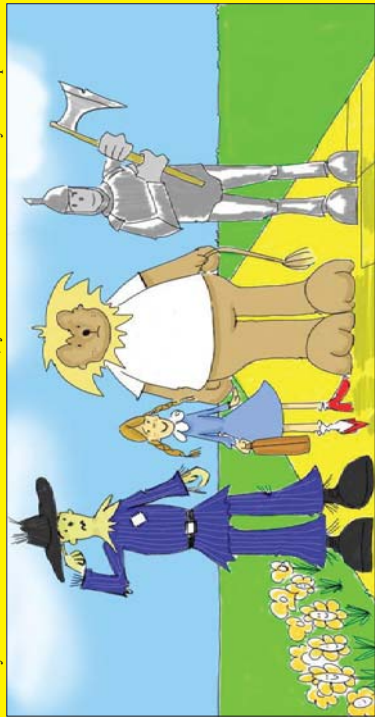
Children's Show

Tim Kelly's "The Wonderful Wizard of Oz"

The "Wizard of Oz" is one of the most popular children's stories ever written. A cyclone carries Dorothy and her dog, Toto, to the magical land of Oz, where they encounter all the famous characters from the pen of L. Frank Baum... the Cowardly Lion, the Tin Woodsman, the rubber-legged Scarecrow, Glinda the Good Witch and the evil Witch of the West, who is determined to destroy Dorothy and steal the secret of the silver slippers.

The play is filled with wonderful stage thrills... like the escape from the dark forest of the Fighting Trees. And we don't want to forget the awesome and funny meetings with the great Oz himself.

Eventually Dorothy defeats the evil witch, finds a way to return to Kansas, and her companions have their wishes granted.



January 1, 2007 - December 31, 2007

Membership Form for

The Elkhorn Community Theatre

Many Levels of Giving Available - Join Today!

All Memberships Include:

- Receive all audition notices and newsletters, mailed directly to your home or business.
- Receive name recognition in the program.
- Receive reduced production fees for cast members.
- Receive preferred seating by taking advantage of purchasing your tickets for the summer show in advance of when they go on sale to the general public.

Family Membership (\$25-\$49)

Base Membership Benefits

Actor Membership (\$50-\$99)

Includes 1 Paid 2007 Ball Reservation if Received by January 5, 2007

Star Memberships (\$100-\$249)

Includes 2 Paid 2007 Ball Reservations if Received by January 5, 2007, PLUS
• 2 tickets to our Summer Production

Director's Membership (\$250-\$499)

Includes 4 Paid 2007 Ball Reservations if Received by January 5, 2007, PLUS
• 6 tickets to our Summer Production • 2 tickets to our Children's Winter Production

Producer's Membership (\$500-\$999)

Includes 8 Paid 2007 Ball Reservations if Received by January 5, 2007, PLUS
• 10 tickets to our Summer Production • 6 tickets to our Children's Winter Production

Patron Membership (\$1000 and Up)

Includes 12 Paid 2007 Ball Reservations if Received by January 5, 2007, PLUS
• Logo Sponsorship in Programs for the Season

• 20 tickets to our Summer Production • 6 tickets to our Children's Winter Production

To Guarantee Your Reservations, Clip and Remit with Payment by January 5, 2007 to:

Elkhorn Community Theatre P.O. Box 677 Elkhorn, NE 68022

If questions, call any board member:

Allen Barnard 691-8050 • Cindy Kahnk 289-1068 • Larry Brophy 289-2059 • Mark Latta 894-5750
Penny Overmann 289-4413 • Janet Melia 289-5476 • Riley Garrigan 289-3378

Name(s) to be Listed in Programs: _____

Address _____ City _____ State _____ Zip _____

Phone Number _____ E-Mail _____

I would like to nominate _____ for the ECT Board of Directors.

Need Additional Reservations to the Ball?

Join by January 5, 2007 and receive additional paid reservations for your guests for just \$35 per person!

Grand Total # of Reservations Needed: _____ *Sorry - no late reservations accepted!*

Membership Type: Family _____ Actor _____ Star _____ Director _____ Producer _____ Patron _____

Total \$ Enclosed for Membership & Reservations _____ (Please enclose payment with Form)

Donations are Tax Deductible.
The ECT is a 501(c)(3) Corporation.